

DAMEN MULTICAT® 3013

“NERO”



GENERAL

YARD NUMBER	571678 (Damen Shipyards Hardinxveld)
DELIVERY DATE	2013
BASIC FUNCTIONS	Anchor handling, dredger service, supply, towing, hose handling and survey
CLASSIFICATION	Bureau Veritas I ✳Tug Unrestricted navigation • MACH, AUT-UMS
NAT. AUTHORITIES	Dutch Shipping Inspectorate (IVW): Unrestricted service
FLAG	The Netherlands
OWNER	ST Marine Support, The Netherlands

DIMENSIONS

LENGTH O.A.	30.14	m
LENGTH MLD	28.00	m
BEAM MLD.	12.50	m
DEPTH AT SIDES (1/2 L)	3.80	m
DRAUGHT AFT (APPROX.)	± 2.60	m

TANK CAPACITIES

FUEL OIL	208.5	m ³
BLACK/GREY WATER	6.8	m ³
FRESH WATER	53.5	m ³
DIRTY OIL	4.4	m ³
HYDR OIL	4.4	m ³
LUB OIL	2.8	m ³
BILGE WATER	2.8	m ³
FRESH WATER (TRIM)	84.5	m ³

PERFORMANCES

BOLLARD PULL	Approx 39	ton(m)
SPEED	10.8	knots

PROPULSION SYSTEM

MAIN ENGINES	3x Caterpillar C32 TTA
TOTAL POWER	2117 kW (2879 bhp) at 1600 rpm
GEARBOXES	3x Reintjes WAF 562 5-947 : 1
PROPULSION	3x Promarin fixed pitch propellers in Optima nozzles, 1700 mm
BOWTHRUSTER	Hydraulically driven 200 kW (272 hp), 360°

AUXILIARY EQUIPMENT

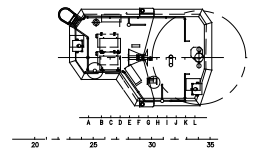
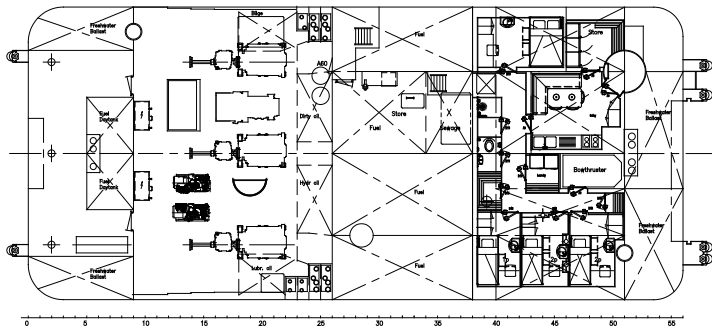
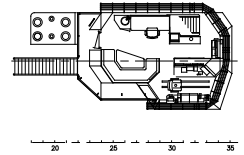
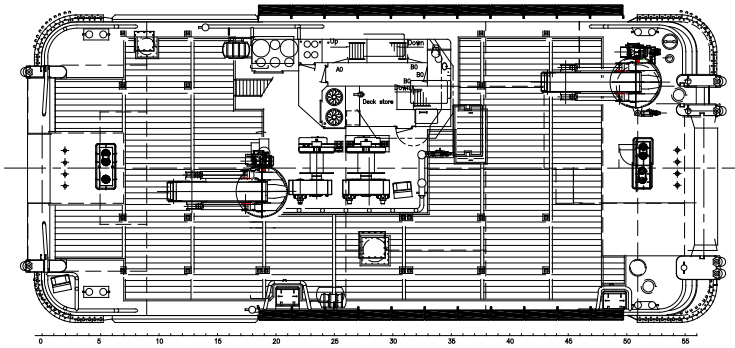
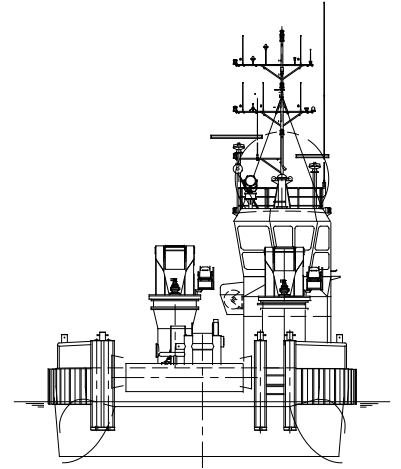
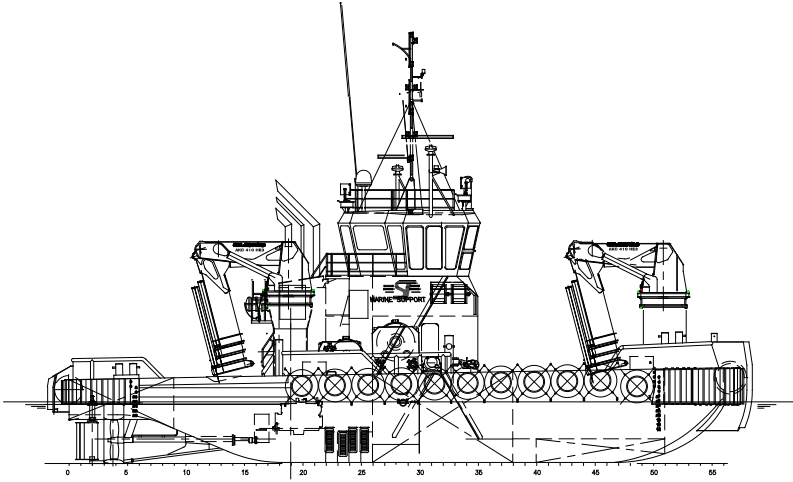
GENERATOR SETS	2x Caterpillar C 04.
HYDRAULIC POWER	Caterpillar C32 TTA
FUEL OIL SEPERATOR	Alfa Laval MIB 303
AIR COMPRESSOR	Alup SCK 30-10 scr

DECK LAY-OUT

ANCHOR	2x 360 kg Pool TW (HHP) (one spare)
CHAIN	19 mm stud-link anchor chain 275 m
ANCHOR WINCH	Ridderinkhof, hydraulically driven
DECK CRANE	2x HS marine AKC 410 18 HE3 49.1 ton(m) @ 5,74m; 13,5 ton (m) @ 18.00 m
ANCHOR HANDLING WINCH	Kraaijeveld KA-30/3-H-TR
CAPACITY	150 ton at 8 m/min pulling force (1 st layer) 30 ton at 32 m/min pulling force (1 st layer) 170 ton brake holding force (1 st layer)
TOWING WINCH	Kraaijeveld KA-20-H-TR
CAPACITY	40 ton at 12 m/min pulling force (1 st layer) 12 ton at 24 m/min pulling force (1 st layer) 100 ton brake holding force (1 st layer)
TOWING HOOK	2x Mampaey 20 ton SWL
TUGGER WINCHES	2x Dromec 12 ton at 4,5 m/min
TOWING PINS	Fore WK Hydraulics four pins in row type Aft WK Hydraulics triple pin type

NAUTICAL AND COMMUNICATION EQUIPMENT

SEARCH LIGHTS	2x Pesch 2000 W
RADAR SYSTEM	1x Furuno, FAR 2117; 1x Furuno, FR 8062
COMPASS	1x Cassens & Plat, Reflecta 1
GYRO COMPASS	1x Tokimec, ES- 160
ECHOSOUNDER	1x Furuno, FE-700
SPEEDLOG	1x Furuno, DS-80
GPS	1x Furuno, GP-150 D
CHARTSYSTEM	1x Transas NS 4000
AUTOPILOT	1x Sea pilot 75
VHF	2x Sailor, RT6222
HANDHELD VHF	2x TR-20
SSB	1x Furuno FS 1570
INMARSAT - C	2x Thrane & Thrane Sailor 6110
NAVTEX	1x Furuno, NX-700
IRIDIUM TELEPHONE	1x Sailor, SC 4000A
GSM TELEPHONE	1x Sagem, RT 3000
AIS	1x Furuno, FA-150
WATCH ALARM	1x Marble, 421
INTERCOM	Sigma-700
ENTERTAINMENT SYSTEM	1x Seatel, Coastal 24



Rienk Switjnk: +31(0)651204686
 Vasco Tammes: +31(0)653695843

www.marinesupport.nl · info@marinesupport.nl

